

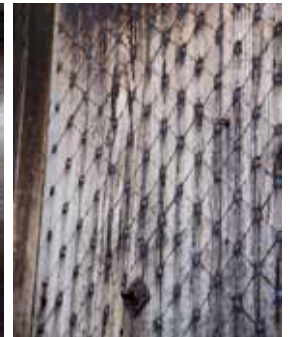
THE HOUSE OF THE SEVEN GABLES



Ben Lithgow
Assistant Manager
of Visitor Services

978-306-7006 | blithgow@7gables.org

The House of the Seven Gables
115 Derby Street | Salem, MA
978-744-0991
7gables.org



2020/2021 PROFESSIONAL TOUR OPERATOR RATES

Complimentary admission for one bus driver and one professional tour director per bus.

	Regular Rate (minimum of 10 paid guests)	*October Weekend Rate (minimum of 15 paid guests)
Adult	\$14.00	\$17.00
College/Senior (65+)	\$12.00	\$15.00
Student (13-18)	\$10.00	\$13.00
Child (5-12)	\$8.00	\$11.00

* For October weekend reservations a final headcount and full payment is required 72 hours prior to arrival.

Book your visit today! 7gables.org/visit/group-tours/

PLANNING YOUR VISIT

- We accommodate groups of up to 72 guests per 30 minutes. Larger groups may stagger arrival times 30 minutes apart.
- Student Groups:** One chaperone per 10 students is complimentary and required for admittance.
- Additional student group information can be found online: 7gables.org/visit/field-trips/
- Salem.org:** See more of what Salem has to offer for attractions, shopping, lodging and restaurants at: salem.org/group-tour

FOREIGN LANGUAGE TRANSLATIONS

- Transcripts of our tour are available in French, Spanish, Chinese (Mandarin and Cantonese), Japanese, German, and Brazilian Portuguese.
- Transcripts can be provided via email or printed for your guests to use during their visit with advance notice.

OPERATING HOURS

Reservations available on the hour and half-hour during the following hours of operation:

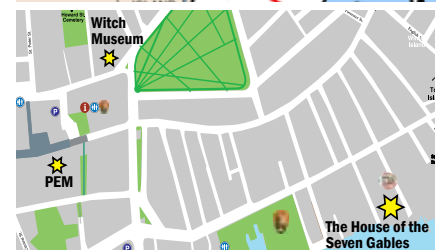
November - June:
10:00AM - 4:00PM

July - October:
10:00AM - 5:00PM

- For more information, please visit 7gables.org, find us on Facebook, or call 978-744-0991.

DIRECTIONS

Just 16 miles north of Boston, Salem is easily accessible by car, train, bus and seasonal ferry. For more information: salem.org/parking-map-transportation



We are walking distance to the Peabody Essex Museum and the Salem Witch Museum.



THE HOUSE OF THE SEVEN GABLES

7gables.org/visit/group-tours



@h7gables

#H7G



DISCOVER A HISTORICAL TREASURE

Our 2 1/2 acre National Historic Landmark District includes:

- Carefully preserved 17th-and 18th-century period homes.
- Three-season Colonial Revival Gardens.
- Breathtaking views of Salem Harbor, Derby Wharf, and the tall ship *Friendship*.

Enjoy The House of the Seven Gables, properly known as the Turner-Ingersoll Mansion (1668), featuring:

- A professional 30-40 minute tour about the prosperity, philanthropy and history of the 350 year old house.
- The famous **Secret Staircase** that guests can climb!

Explore Nathaniel Hawthorne's Birthplace (c.1750):

- Learn about the famous author of *The Scarlet Letter* and *The House of the Seven Gables*.
- Examine items owned by Hawthorne and his family.
- See furnished examples of mid-18th century rooms.

Shop The Museum Store located in the historic Retire Beckett House (1655).

- Located in the oldest building on the property.
- Stocked with exclusive items, unique gifts, books and souvenirs.



EXPERIENCE OUR OCTOBER EVENING THEATRICAL PERFORMANCES

Performances take place on select Friday and Saturday nights in October.

Performances start at 8:00PM and begin every 5-10 minutes. Each show is approximately 35 minutes long.

October Performance Rate: \$17.00/show; Combination ticket: \$32.00



LEGACY OF THE HANGING JUDGE

Performed in the Nathaniel Hawthorne Birthplace

Relive the 1692 Salem Witch Trials events - based on historic transcripts. Prepare to encounter the tormented, the accused and their accusers in this captivating theatrical experience.

* Please note: *Legacy of the Hanging Judge* does not include access to *The House of the Seven Gables*.



SPIRITS OF THE GABLES

Performed in *The House of the Seven Gables*

Guilt! Greed! Revenge! Enter the world of Nathaniel Hawthorne's burdened characters from his classic *The House of the Seven Gables*, as they haunt the hallways of their eerie mansion.

ACCESSIBILITY/LIMITED MOBILITY

Due to the nature of their historic architecture The House of the Seven Gables, the Nathaniel Hawthorne Birthplace, and the Hooper-Hathaway House are not wheelchair accessible. Our Visitor Center and restrooms, Colonial Revival Gardens, museum grounds and a portion of the museum store are wheelchair accessible.

Tours and performances last approximately 30-40 minutes and take place on multiple levels in our 17th- and 18th-century houses. Visitors are standing, walking, or climbing stairs during these experiences. Information is available about the rooms for those that cannot access any portion of the tour.